



GAT MONTHLY MEMBERSHIP PROGRESS REPORT

Results as of: 12/31/2022

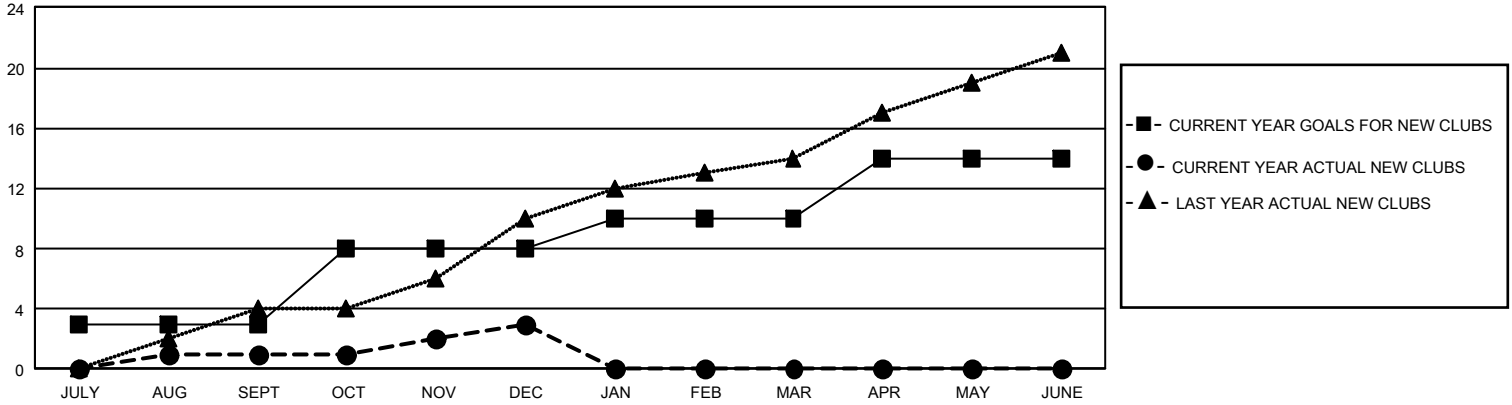
GMT Constitutional Area 8, Group D

REPORT DOES NOT INCLUDE CLUBS IN UNDISTRICTED AREAS.

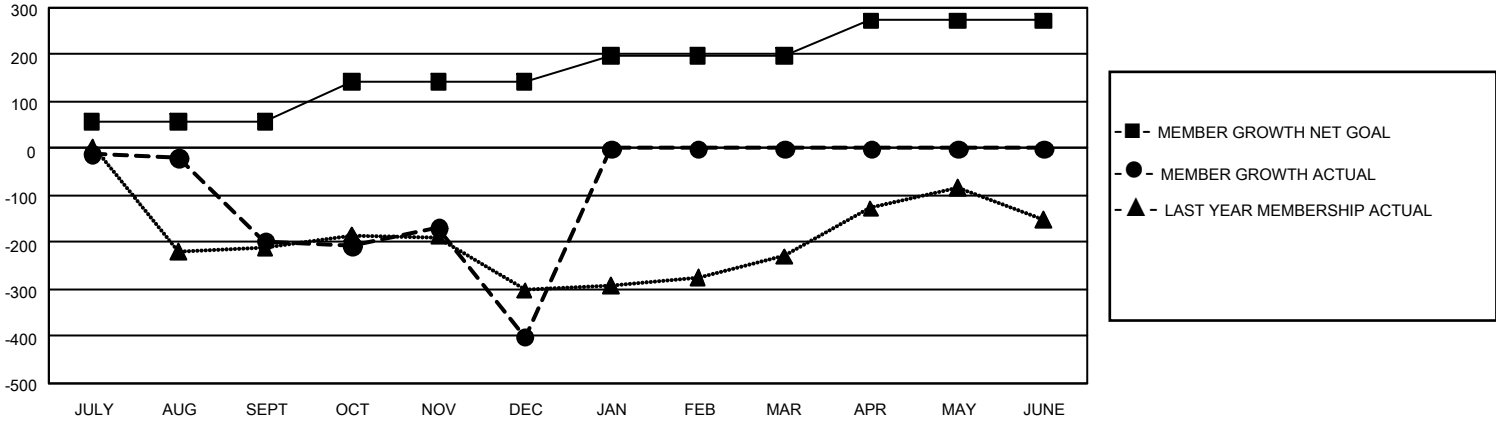
Clubs			
RESULTS FOR 2022-2023			
QUARTER	NEW CLUB GOAL	NEW CLUBS	DROPPED CLUBS
JULY/AUG/SEPT	9	1	7
OCT/NOV/DEC	15	2	11
JAN/FEB/MAR	6	0	0
APR/MAY/JUNE	12	0	0

Members			
RESULTS FOR 2022-2023			
QUARTER	MEMBER GROWTH NET GOAL	MEMBER GROWTH ACTUAL	DROPPED MEMBERS ACTUAL (including transfers)
JULY/AUG/SEPT	58	180	356
OCT/NOV/DEC	85	467	631
JAN/FEB/MAR	55	0	0
APR/MAY/JUNE	75	0	0

GOALS AND ACTUAL NEW CLUBS CUMULATIVE



GOALS AND ACTUAL MEMBERS CUMULATIVE



DROPPED CLUBS: 18	82 CLUBS OF 190 ADDED 1 OR MORE NEW MEMBERS	<u>GENDER DISTRIBUTION</u>	
		MALE 1,448 (39.16%)	FEMALE 2,245 (60.71%)
<u>DROPPED MEMBERS</u>		NON BINARY 1 (0.03%)	PREFER NOT TO ANSWER 4 (0.11%)
DECEASED 9	CLICK HERE FOR CUMULATIVE MEMBERSHIP DATA	TOTAL FAMILY UNIT MEMBERS 538	
CLUB CANCELLED 331		FAMILY MEMBERS PAYING HALF DUES 316	
OTHER 647			
TOTAL 987			